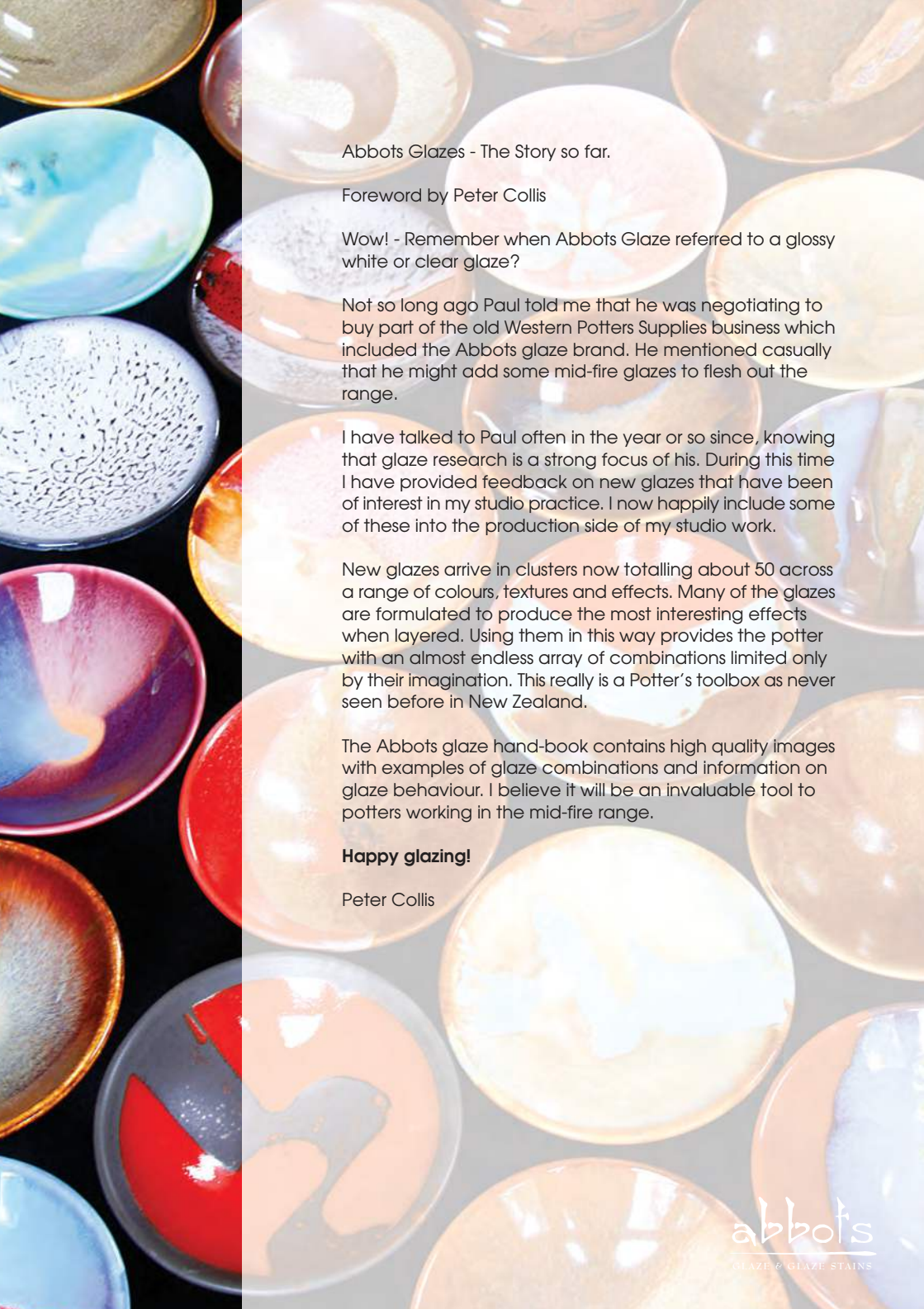


THE ABBOTS MID-FIRE GLAZE HANDBOOK 2013

Foreword by Peter Collis

www.abbots.co.nz





Abbotts Glazes - The Story so far.

Foreword by Peter Collis

Wow! - Remember when Abbotts Glaze referred to a glossy white or clear glaze?

Not so long ago Paul told me that he was negotiating to buy part of the old Western Potters Supplies business which included the Abbotts glaze brand. He mentioned casually that he might add some mid-fire glazes to flesh out the range.

I have talked to Paul often in the year or so since, knowing that glaze research is a strong focus of his. During this time I have provided feedback on new glazes that have been of interest in my studio practice. I now happily include some of these into the production side of my studio work.

New glazes arrive in clusters now totalling about 50 across a range of colours, textures and effects. Many of the glazes are formulated to produce the most interesting effects when layered. Using them in this way provides the potter with an almost endless array of combinations limited only by their imagination. This really is a Potter's toolbox as never seen before in New Zealand.

The Abbotts glaze hand-book contains high quality images with examples of glaze combinations and information on glaze behaviour. I believe it will be an invaluable tool to potters working in the mid-fire range.

Happy glazing!

Peter Collis

Introduction to this hand-book.

The collection of glazes presented here have been generously given by friends, scoured from the internet and books or are accidents happily encountered in the endless search for some elusive effect.

All have been manipulated to make use of commonly available materials and to avoid those that are prohibitively expensive, unreliable or not easily available. All have been extensively tested. The chemistry of each glaze and its components is well understood which is important to deliver the desired results as well as manage the risks associated with some materials. Where we have described glazes as food-safe this is our judgement based on this knowledge - none has been laboratory tested. Unbalanced and highly textured glazes have not been assigned 'food-safe' status even when they contain only benign materials. Where glazes contain high levels of barium necessary for some effects this is shown in the data for that glaze.

Most of the glazes are entirely dependable at cone 5 and cone 6. Their performance may vary from clay to clay, and in general they will need more heat on stoneware bodies than on the Primo vitreous mid-fire bodies and porcelains used by us.

A few glazes are prone to running and duly identified. Remember that when you layer glazes over one another you will increase the risk of running. This can be managed in many ways but the most important thing is to test, test and test. Avoid building layers on the outside of your work until the glaze behaviour is well understood. This will save kiln shelves and tears.

The glazes can be dipped, poured, brushed and sprayed onto bisque surfaces. The use of our Universal Medium may assist with brushing and layering. About half the Abbots glazes can be purchased in brushable form as well as powder. The glazes react and intermingle with one another to yield a spectacular array of effects. Be brave enough to try anything and everything and you will be rewarded.

Many observers may notice similarities to Brian Gartside's work among our examples. This is no accident - Brian has taken a close interest in our project and provided valuable help and advice.

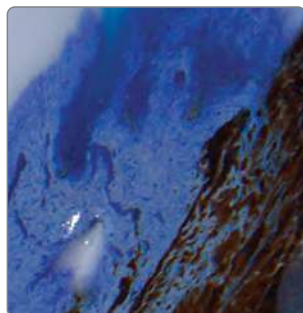
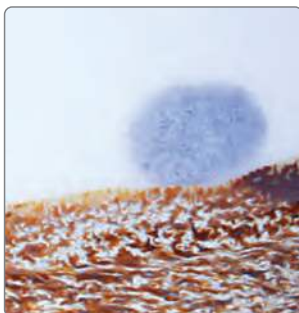
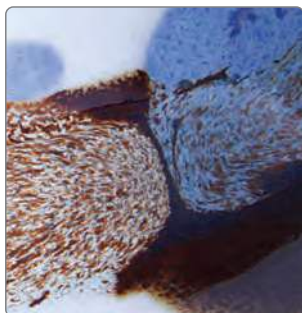
Since launching the Abbots Glazes in 2011 Paul has held application workshops at many pottery clubs and associations around New Zealand. These popular events are aimed at encouraging experimentation and exploring the many effects possible through layering glaze and the use of wax resist. Invariably participants start having more fun and more success with glazing. Please contact Paul at Decopot Ltd to arrange a workshop in your area.

Since the first release some of the less popular glazes have been taken out of regular production to make room for new ones. If one of your favourites has apparently been discontinued feel free to ask for it. We can make batches of 10Kg and more against firm orders.

<http://www.abbots.co.nz>

abbots
GLAZE & GLAZE STAINS

ABBOTS CLEAR (cone 3-6)



GLOSSY



CRACKLE



SOAK AT 900C
(COOLING)



MATTE



USE THICK



FOOD-SAFE
(OUR OPINION)



TEXTURED



USE THIN



HIGH BARIUM



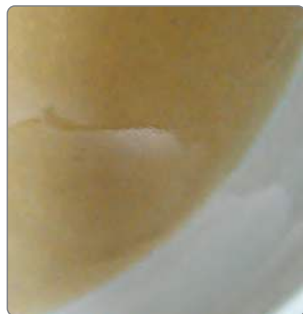
REACTIVE



MIGHT BE RUNNY



ABBOTS WHITE (cone 3-6)



GLOSSY

☐

CRACKLE

☐

SOAK AT 900C
(COOLING)

☐

MATTE

☒

USE THICK

☒

FOOD-SAFE
(OUR OPINION)

☒

TEXTURED

☐

USE THIN

☐

HIGH BARIUM

☐

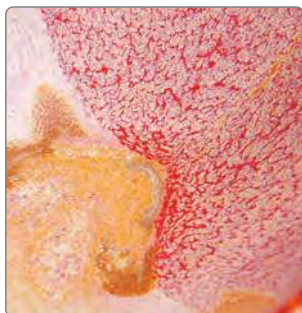
REACTIVE

☒

MIGHT BE RUNNY

☐

ALMOND



GLOSSY



CRACKLE



SOAK AT 900C
(COOLING)



MATTE



USE THICK



FOOD-SAFE
(OUR OPINION)



TEXTURED



USE THIN



HIGH BARIUM



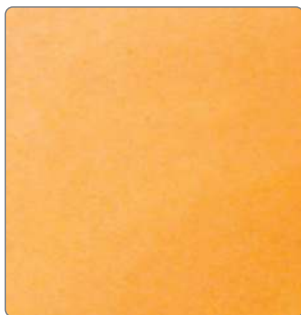
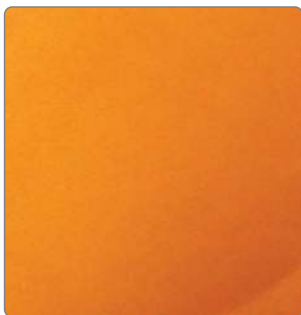
REACTIVE



MIGHT BE RUNNY



APRICOT



GLOSSY



CRACKLE



SOAK AT 900C
(COOLING)



MATTE



USE THICK



FOOD-SAFE
(OUR OPINION)



TEXTURED



USE THIN



HIGH BARIUM



REACTIVE



MIGHT BE RUNNY



COBALT BLUE



GLOSSY



CRACKLE



SOAK AT 900C
(COOLING)



MATTE



USE THICK



FOOD-SAFE
(OUR OPINION)



TEXTURED



USE THIN



HIGH BARIUM



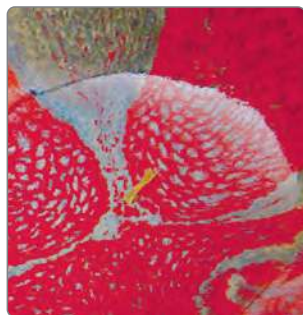
REACTIVE



MIGHT BE RUNNY



DEEP GLOSSY RED



GLOSSY



CRACKLE



SOAK AT 900C
(COOLING)



MATTE



USE THICK



FOOD-SAFE
(OUR OPINION)



TEXTURED



USE THIN



HIGH BARIUM



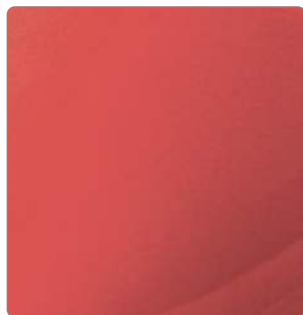
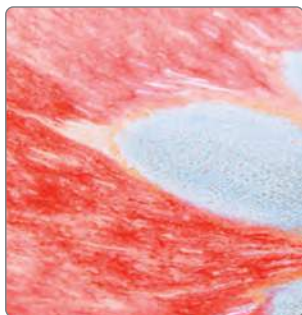
REACTIVE



MIGHT BE RUNNY



FLAMINGO



GLOSSY



CRACKLE



SOAK AT 900C
(COOLING)



MATTE



USE THICK



FOOD-SAFE
(OUR OPINION)



TEXTURED



USE THIN



HIGH BARIUM



REACTIVE



MIGHT BE RUNNY



GLOSSY TURQUOISE



GLOSSY



CRACKLE



SOAK AT 900C
(COOLING)



MATTE



USE THICK



FOOD-SAFE
(OUR OPINION)



TEXTURED



USE THIN



HIGH BARIUM



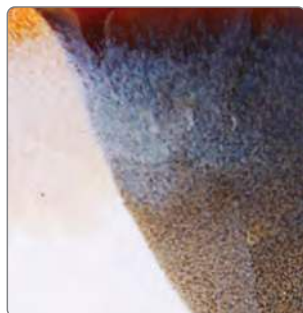
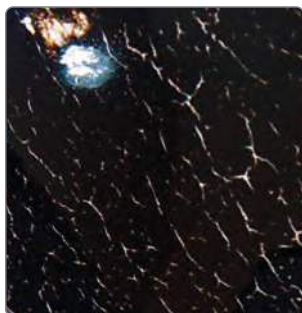
REACTIVE



MIGHT BE RUNNY



GLOSSY WHITE



GLOSSY



CRACKLE



SOAK AT 900C
(COOLING)



MATTE



USE THICK



FOOD-SAFE
(OUR OPINION)



TEXTURED



USE THIN



HIGH BARIUM



REACTIVE



MIGHT BE RUNNY



GLOSSY YELLOW



GLOSSY



CRACKLE



SOAK AT 900C
(COOLING)



MATTE



USE THICK



FOOD-SAFE
(OUR OPINION)



TEXTURED



USE THIN



HIGH BARIUM



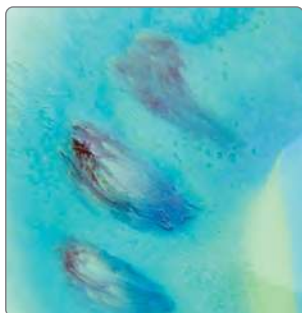
REACTIVE



MIGHT BE RUNNY



GRANNYSMITH



GLOSSY



CRACKLE



SOAK AT 900C
(COOLING)



MATTE



USE THICK



FOOD-SAFE
(OUR OPINION)



TEXTURED



USE THIN



HIGH BARIUM



REACTIVE



MIGHT BE RUNNY



JADE



GLOSSY



CRACKLE



SOAK AT 900C
(COOLING)



MATTE



USE THICK



FOOD-SAFE
(OUR OPINION)



TEXTURED



USE THIN



HIGH BARIUM



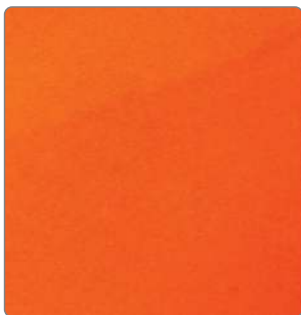
REACTIVE



MIGHT BE RUNNY



MANDARIN



GLOSSY



CRACKLE



SOAK AT 900C
(COOLING)



MATTE



USE THICK



FOOD-SAFE
(OUR OPINION)



TEXTURED



USE THIN



HIGH BARIUM



REACTIVE



MIGHT BE RUNNY



MIRROR BLACK



GLOSSY



CRACKLE



SOAK AT 900C
(COOLING)



MATTE



USE THICK



FOOD-SAFE
(OUR OPINION)



TEXTURED



USE THIN



HIGH BARIUM



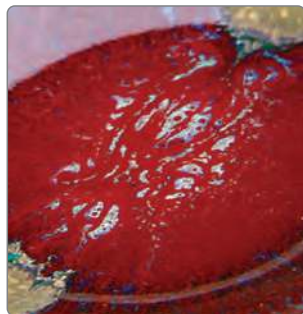
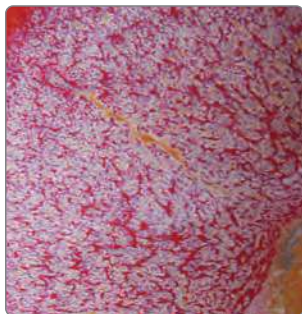
REACTIVE



MIGHT BE RUNNY



WINE RED



GLOSSY



CRACKLE



SOAK AT 900C
(COOLING)



MATTE



USE THICK



FOOD-SAFE
(OUR OPINION)



TEXTURED



USE THIN



HIGH BARIUM



REACTIVE



MIGHT BE RUNNY



CRACKLE GLAZES

CLEAR CRACKLE



GLACIER



LAGOON



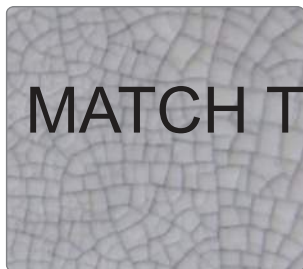
CRATER LAKE



OLIVE CRACKLE



SKY BLUE CRACKLE



MATCH TO

GLOSSY



CRACKLE



SOAK AT 900C
(COOLING)



MATTE



USE THICK



FOOD-SAFE
(OUR OPINION)



TEXTURED



USE THIN



HIGH BARIUM



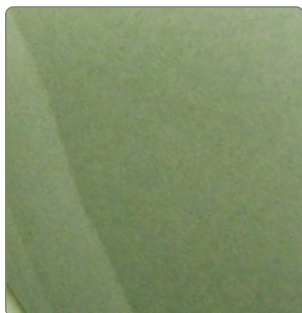
REACTIVE



MIGHT BE RUNNY



CELADON



GLOSSY



CRACKLE



SOAK AT 900C
(COOLING)



MATTE



USE THICK



FOOD-SAFE
(OUR OPINION)



TEXTURED



USE THIN



HIGH BARIUM



REACTIVE



MIGHT BE RUNNY



CHUN BLUE



GLOSSY



CRACKLE



SOAK AT 900C
(COOLING)



MATTE



USE THICK



FOOD-SAFE
(OUR OPINION)



TEXTURED



USE THIN



HIGH BARIUM



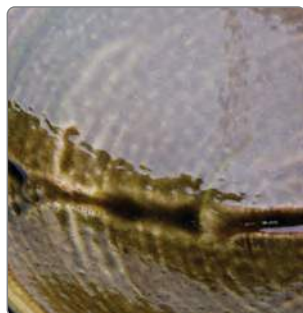
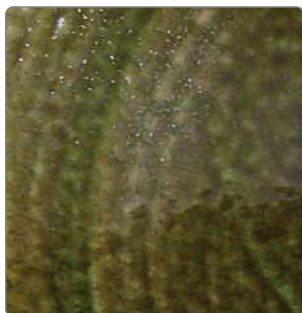
REACTIVE



MIGHT BE RUNNY



FAKE ASH GLAZE



GLOSSY



CRACKLE



SOAK AT 900C
(COOLING)



MATTE



USE THICK



FOOD-SAFE
(OUR OPINION)



TEXTURED



USE THIN



HIGH BARIUM



REACTIVE



MIGHT BE RUNNY



FLOATING GREEN



GLOSSY



CRACKLE



SOAK AT 900C
(COOLING)



MATTE



USE THICK



FOOD-SAFE
(OUR OPINION)



TEXTURED



USE THIN



HIGH BARIUM



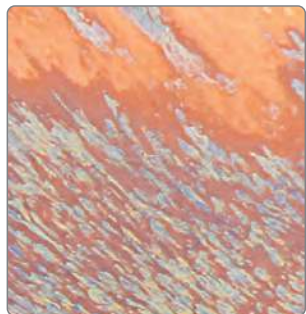
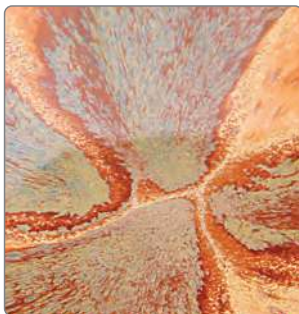
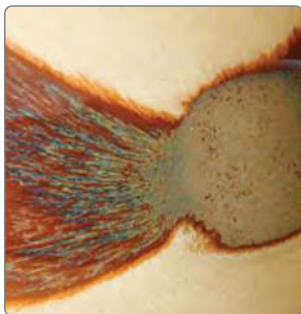
REACTIVE



MIGHT BE RUNNY



HAYSTACK



GLOSSY



CRACKLE



SOAK AT 900C
(COOLING)



MATTE



USE THICK



FOOD-SAFE
(OUR OPINION)



TEXTURED



USE THIN



HIGH BARIUM



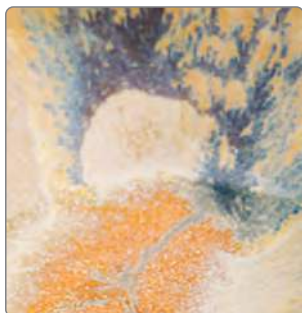
REACTIVE



MIGHT BE RUNNY



HOKEY POKEY



GLOSSY



CRACKLE



SOAK AT 900C
(COOLING)



MATTE



USE THICK



FOOD-SAFE
(OUR OPINION)



TEXTURED



USE THIN



HIGH BARIUM



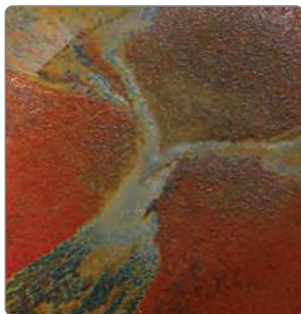
REACTIVE



MIGHT BE RUNNY



IRON BREAK



GLOSSY

☐

CRACKLE

☐

SOAK AT 900C
(COOLING)

☒

MATTE

☒

USE THICK

☒

FOOD-SAFE
(OUR OPINION)

☐

TEXTURED

☒

USE THIN

☒

HIGH BARIUM

☐

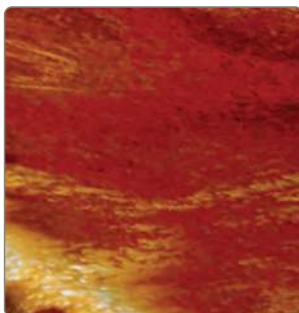
REACTIVE

☒

MIGHT BE RUNNY

☒

MALT



GLOSSY



CRACKLE



SOAK AT 900C
(COOLING)



MATTE



USE THICK



FOOD-SAFE
(OUR OPINION)



TEXTURED



USE THIN



HIGH BARIUM



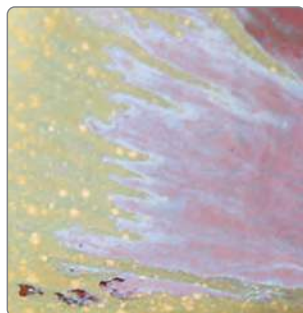
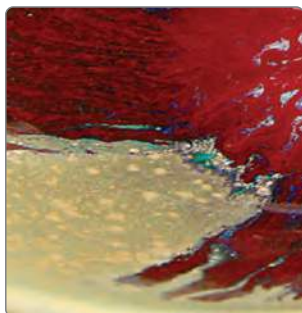
REACTIVE



MIGHT BE RUNNY



POLLEN



GLOSSY

☐

CRACKLE

☐

SOAK AT 900C
(COOLING)

☐

MATTE

☒

USE THICK

☐

FOOD-SAFE
(OUR OPINION)

☐

TEXTURED

☒

USE THIN

☒

HIGH BARIUM

☐

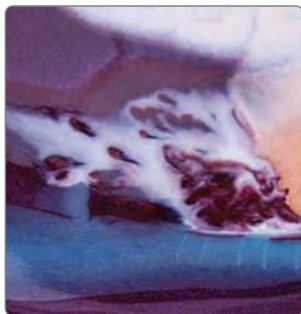
REACTIVE

☒

MIGHT BE RUNNY

☒

PURPLE HAZE



GLOSSY



CRACKLE



SOAK AT 900C
(COOLING)



MATTE



USE THICK



FOOD-SAFE
(OUR OPINION)



TEXTURED



USE THIN



HIGH BARIUM



REACTIVE



MIGHT BE RUNNY



REACTIVE BLACK



GLOSSY



CRACKLE



SOAK AT 900C
(COOLING)



MATTE



USE THICK



FOOD-SAFE
(OUR OPINION)



TEXTURED



USE THIN



HIGH BARIUM



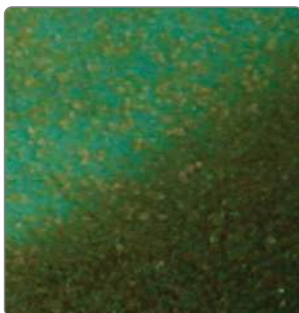
REACTIVE



MIGHT BE RUNNY



REEF



GLOSSY

☐

CRACKLE

☐

SOAK AT 900C
(COOLING)

☐

MATTE

☒

USE THICK

☐

FOOD-SAFE
(OUR OPINION)

☐

TEXTURED

☒

USE THIN

☒

HIGH BARIUM

☐

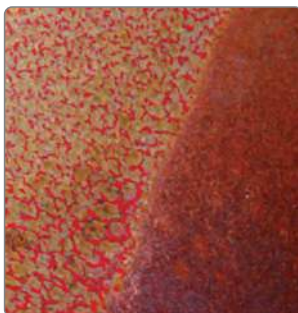
REACTIVE

☒

MIGHT BE RUNNY

☐

SCORIA



GLOSSY

☐

CRACKLE

☐

SOAK AT 900C
(COOLING)

☒

MATTE

☒

USE THICK

☒

FOOD-SAFE
(OUR OPINION)

☐

TEXTURED

☒

USE THIN

☒

HIGH BARIUM

☐

REACTIVE

☒

MIGHT BE RUNNY

☒

SEA URCHIN



GLOSSY

☐

CRACKLE

☐

SOAK AT 900C
(COOLING)

☐

MATTE

☒

USE THICK

☒

FOOD-SAFE
(OUR OPINION)

☐

TEXTURED

☒

USE THIN

☒

HIGH BARIUM

☐

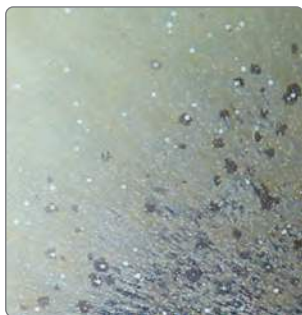
REACTIVE

☒

MIGHT BE RUNNY

☐

SHALE



GLOSSY

☐

CRACKLE

☐

SOAK AT 900C
(COOLING)

☐

MATTE

☒

USE THICK

☐

FOOD-SAFE
(OUR OPINION)

☐

TEXTURED

☒

USE THIN

☒

HIGH BARIUM

☐

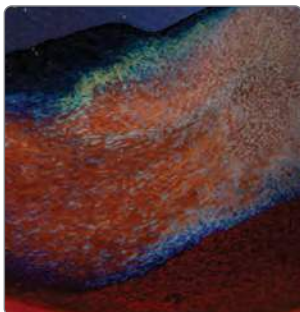
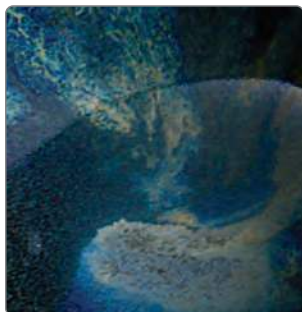
REACTIVE

☒

MIGHT BE RUNNY

☒

TEA DUST



GLOSSY



CRACKLE



SOAK AT 900C
(COOLING)



MATTE



USE THICK



FOOD-SAFE
(OUR OPINION)



TEXTURED



USE THIN



HIGH BARIUM



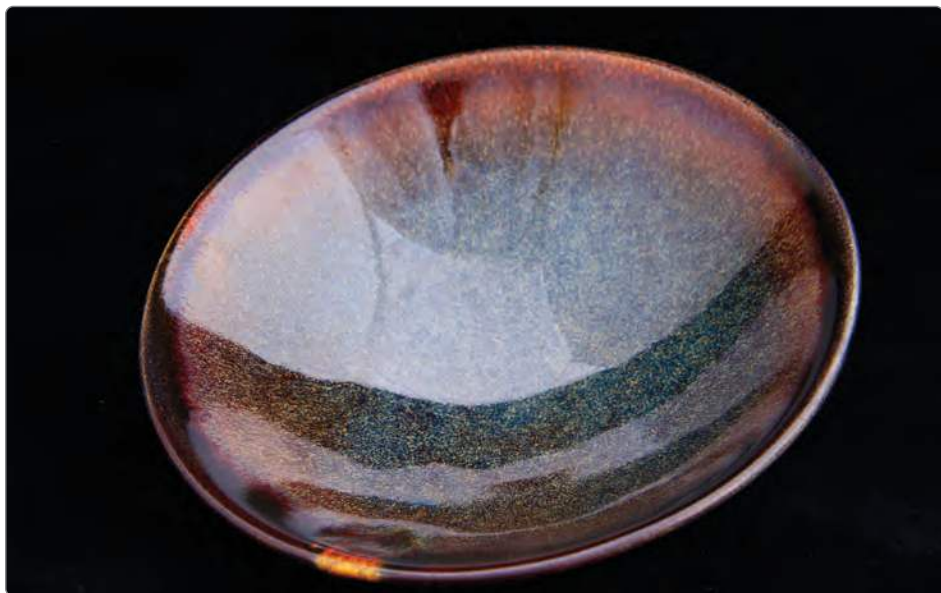
REACTIVE



MIGHT BE RUNNY



TENMOKU



GLOSSY



CRACKLE



SOAK AT 900C
(COOLING)



MATTE



USE THICK



FOOD-SAFE
(OUR OPINION)



TEXTURED



USE THIN



HIGH BARIUM



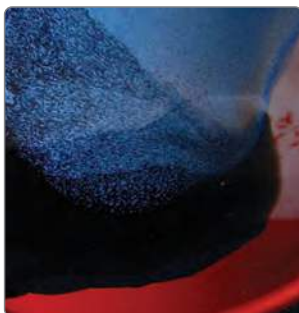
REACTIVE



MIGHT BE RUNNY



VARIGATED BLUE



GLOSSY



CRACKLE



SOAK AT 900C
(COOLING)



MATTE



USE THICK



FOOD-SAFE
(OUR OPINION)



TEXTURED



USE THIN



HIGH BARIUM



REACTIVE



MIGHT BE RUNNY



VELVET GLAZES

MATTE WHITE



MINT



LAVENDER



MELON



PEBBLE



ROSE



BUTTERCUP



GLOSSY

☐

CRACKLE

☐

SOAK AT 900C
(COOLING)

☐

MATTE

☒

USE THICK

☒

FOOD-SAFE
(OUR OPINION)

☒

TEXTURED

☐

USE THIN

☐

HIGH BARIUM

☐

REACTIVE

☐

MIGHT BE RUNNY

☐

BORA BORA



GLOSSY

☐

CRACKLE

☐

SOAK AT 900C
(COOLING)

☐

MATTE

☒

USE THICK

☐

FOOD-SAFE
(OUR OPINION)

☐

TEXTURED

☐

USE THIN

☒

HIGH BARIUM

☒

REACTIVE

☒

MIGHT BE RUNNY

☐

CHARCOAL



GLOSSY

☐

CRACKLE

☐

SOAK AT 900C
(COOLING)

☐

MATTE

☒

USE THICK

☐

FOOD-SAFE
(OUR OPINION)

☒

TEXTURED

☐

USE THIN

☒

HIGH BARIUM

☐

REACTIVE

☒

MIGHT BE RUNNY

☐

MATTE TURQUOISE



GLOSSY

☐

CRACKLE

☐

SOAK AT 900C
(COOLING)

☐

MATTE

☒

USE THICK

☐

FOOD-SAFE
(OUR OPINION)

☐

TEXTURED

☐

USE THIN

☒

HIGH BARIUM

☒

REACTIVE

☒

MIGHT BE RUNNY

☐

ABBOTS CLEAR CONE 3-6

This bright, glossy, clear glaze is perfect for firing over underglaze decoration. It is compatible with a wide range of underglaze products including CLAYBRIGHT LIQUID UNDERGLAZE.

Abbots Clear is a low expansion glaze and will fit most mid-fire bodies. It is specifically matched to PRIMO PRODUCTION WHITE and DECOPOT bisque. It is optimised for temperatures between 1100C and 1200C.

Abbots Clear is manufactured in New Zealand in the Abbots facility.

It is available in 2Kg, 5Kg, 10Kg and 20Kg pack sizes.

ABBOTS WHITE CONE 3-6

This bright, glossy, white glaze is suitable for use with earthenware and mid-fire bodies.

Abbots White is a low expansion glaze and will fit most mid-fire bodies. It is optimised for temperatures between 1100C and 1200C.

Abbots White is manufactured in New Zealand in the Abbots facility.

It is available in 2Kg, 5Kg, 10Kg and 20Kg pack sizes.

MIXING ABBOTS MID-FIRE GLAZES

Most potters will mix the glazes to suit the application style and thickness required. Most of the Abbots glazes give best results when thick. Ash glazes will give best results when thin. Some glazes such as the iron glazes and Sea Urchin are quite fluid and application thickness should be controlled to avoid messy runs!

Add 1kg to 1 litres of water and then add additional water to achieve the desired consistency. Usually no more than 1.3 litres will be required. Pass through an 80# sieve once or twice. Add 1 Kg

Most Abbots glazes are very well suspended. If you wish to enhance the suspension qualities you can do this by cautious incremental additions of calcium chloride, epsom salts or plaster of paris before sieving.

FIRING ABBOTS MID-FIRE GLAZES

We do all our development work in a 1-cubic foot laboratory kiln. To ensure representative results we set our programmer as follows:

Ambient to 200C	100C per hour
200C to 1050C	300C per hour
1050C to 1200C	80C per hour
soak at 1200C	30 minutes
1200C to 1050C	80C per hour (fire down)
Cool	

This firing just bends cone 6 in our kiln. If you follow a similar routine and also bend cone 5 or 6 you should get similar or identical results. You may have to set your controller anywhere between 1180C and 1220C to duplicate these results - all kilns are different.

Some glazes may respond better to different regimes and a wide array of results is possible. The iron red glazes respond well to a fast cool from 1200C to 900C with a 1-hour hold at 900C. We have not yet tested every option.

The iron glazes are very fluid but work best with a thick application. Experiment with a sacrificial catch-tray under pots until you have mastered them - and bat-wash your shelves!

Do experiment with multiple layers of different glazes for unique results.



abbots

GLAZE & GLAZE STAINS

Ph: 06 356 9886 Em: mail@decopot.co.nz
126 Summerhill Drive, Palmerston North, New Zealand

[illegible]